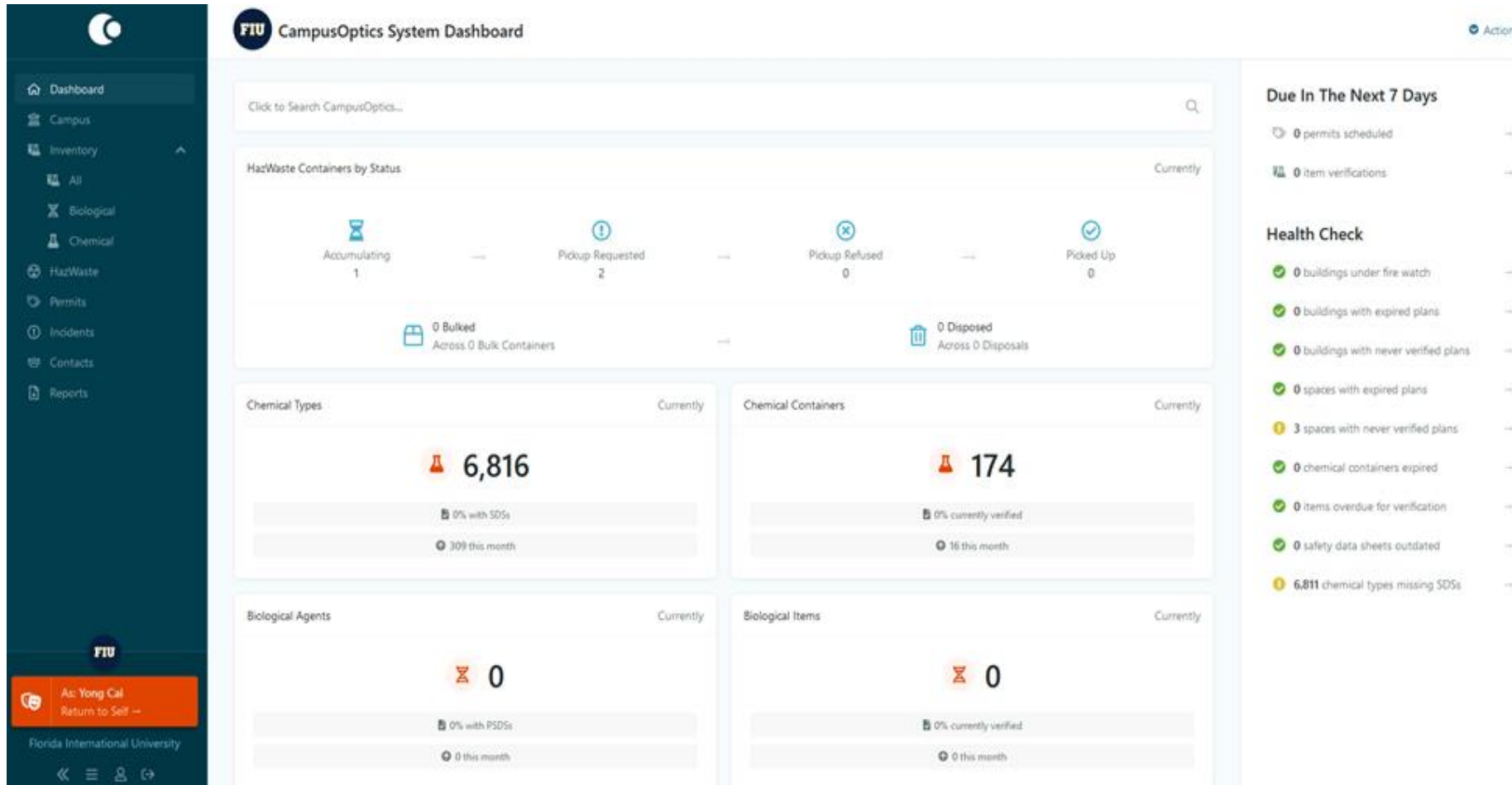


# CampusOptics Quick Guide - Overview

# CampusOptics

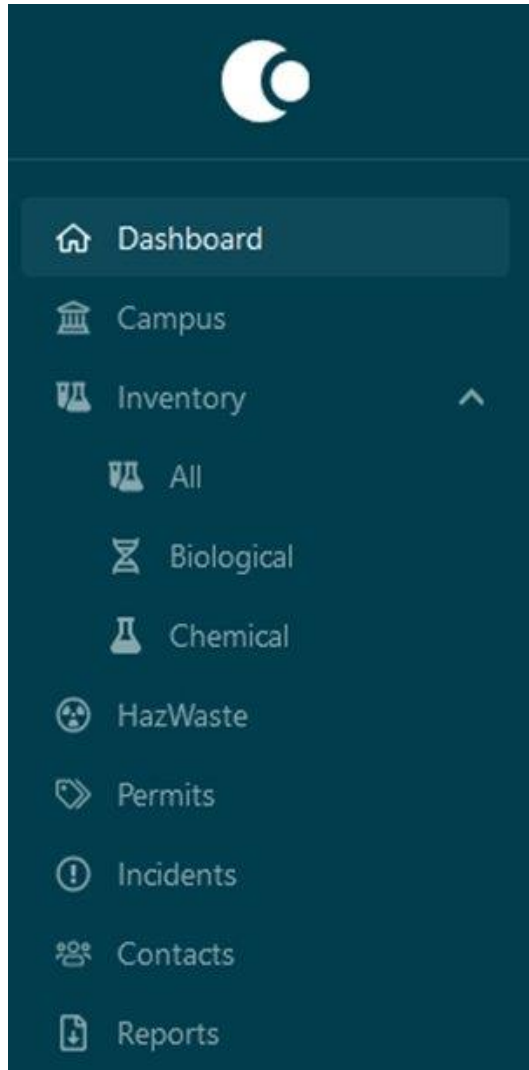
- FIU's digital platform for managing lab safety and compliance.
- It centralizes access to chemical inventory, hazardous waste tracking, and inspection reporting and more.
- Different lab user levels:
  - PIs
  - Lab Manager
  - Lab User

# Dashboard Overview



- This is the main CampusOptics Dashboard.
- You can monitor chemical types, containers, biological items, and hazardous waste status.
- Dashboard and Menu options on the left menu differ by user type.

# Common Capabilities in the system



This is the main navigation panel in CampusOptics.

- Use this sidebar to navigate between Dashboard, Campus, Inventory (Biological, Chemical, etc.), HazWaste, Permits, Incidents, Contacts, Reports, and more.
- User role will dictate level of permissions and menu options

To access your chemical inventory:

- Click **Inventory** > **Chemical**

You can also explore

- **HazWaste** : to request hazardous waste pickup
- **Reports** : to generate inventory or compliance reports
- **Campus** : to view lab spaces by building and manage members